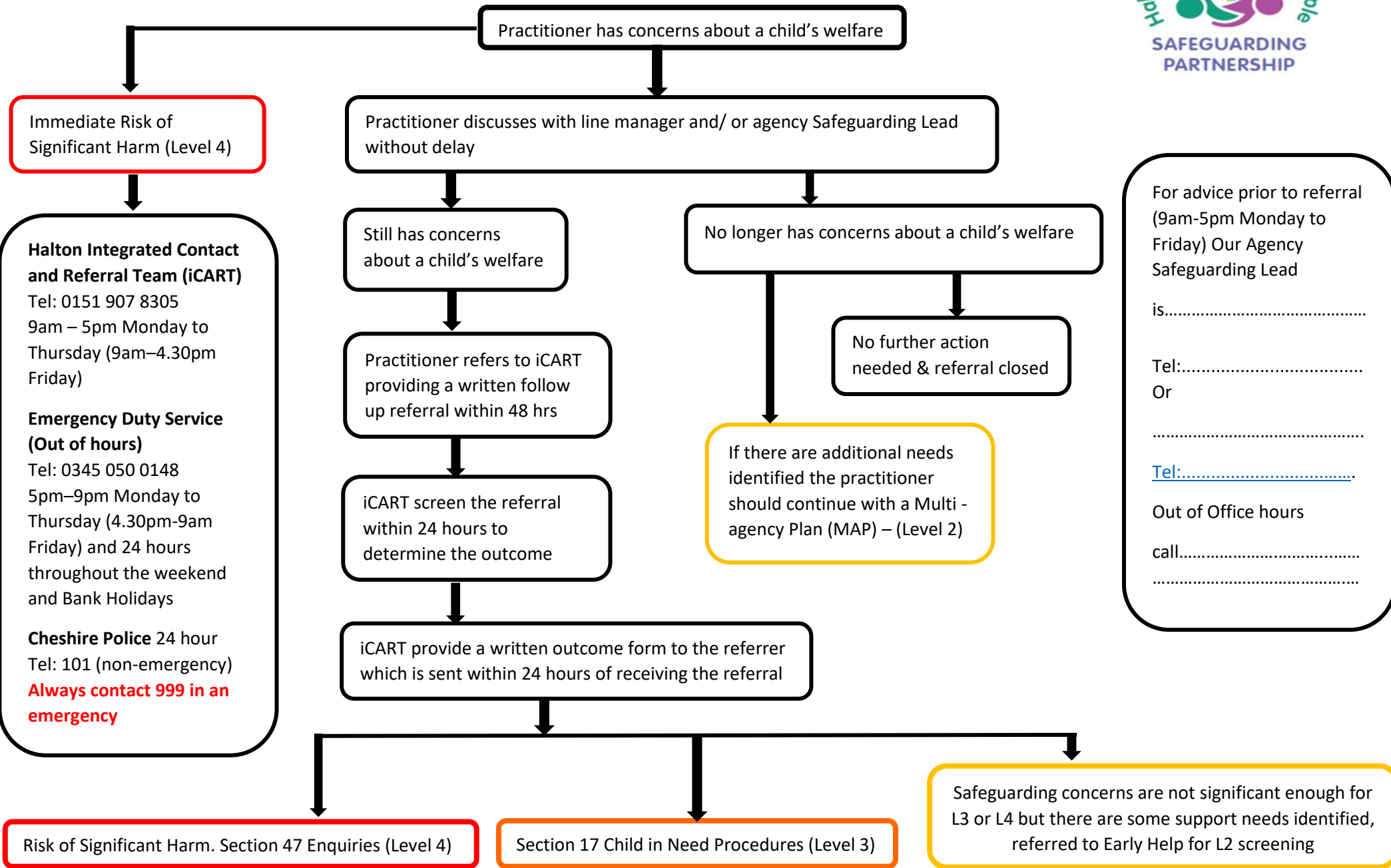


What to do if you have a concern about a child's welfare



Immediate Risk of Significant Harm (Level 4)

Halton Integrated Contact and Referral Team (iCART)
Tel: 0151 907 8305
9am – 5pm Monday to Thursday (9am–4.30pm Friday)

Emergency Duty Service (Out of hours)
Tel: 0345 050 0148
5pm–9pm Monday to Thursday (4.30pm–9am Friday) and 24 hours throughout the weekend and Bank Holidays

Cheshire Police 24 hour
Tel: 101 (non-emergency)
Always contact 999 in an emergency

Practitioner discusses with line manager and/or agency Safeguarding Lead without delay

Still has concerns about a child's welfare

Practitioner refers to iCART providing a written follow up referral within 48 hrs

iCART screen the referral within 24 hours to determine the outcome

iCART provide a written outcome form to the referrer which is sent within 24 hours of receiving the referral

No longer has concerns about a child's welfare

No further action needed & referral closed

If there are additional needs identified the practitioner should continue with a Multi-agency Plan (MAP) – (Level 2)

Risk of Significant Harm. Section 47 Enquiries (Level 4)

Section 17 Child in Need Procedures (Level 3)

Safeguarding concerns are not significant enough for L3 or L4 but there are some support needs identified, referred to Early Help for L2 screening

For advice prior to referral (9am-5pm Monday to Friday) Our Agency Safeguarding Lead is.....
Tel:.....
Or
Tel:.....
Out of Office hours call.....