

Talk to someone...
an adult or a friend you
can trust, they can help you.
If you can't speak to
someone close to you,
call the police on 101.



Talk to someone...
an adult or a friend you
can trust, they can help you.
If you can't speak to
someone close to you,
call the police on 101.



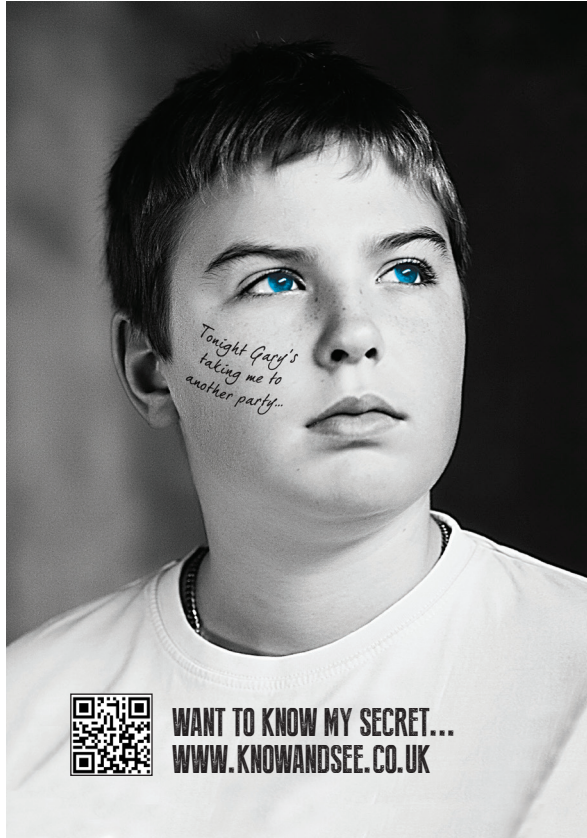
Talk to someone...
an adult or a friend you
can trust, they can help you.
If you can't speak to
someone close to you,
call the police on 101.



Talk to someone...
an adult or a friend you
can trust, they can help you.
If you can't speak to
someone close to you,
call the police on 101.



Talk to someone...
an adult or a friend you
can trust, they can help you.
If you can't speak to
someone close to you,
call the police on 101.



Talk to someone...
an adult or a friend you
can trust, they can help you.
If you can't speak to
someone close to you,
call the police on 101.



Talk to someone...
an adult or a friend you
can trust, they can help you.
If you can't speak to
someone close to you,
call the police on 101.



Talk to someone...
an adult or a friend you
can trust, they can help you.
If you can't speak to
someone close to you,
call the police on 101.



